



"BIG ENOUGH TO SERVE YOU, SMALL ENOUGH TO CARE"  
- Phil Carter



WEIGH-OFF WILL BE  
SEPTEMBER 25<sup>TH</sup>, 12:00 PM AT  
CARTER AGRI-SYSTEMS IN LUND, NEVADA

**EMPLOYMENT OPPORTUNITIES**  
[www.carterag.com/employment](http://www.carterag.com/employment)



*New Holland T8.360 Tractor with Laser Scraper*

*Massey Ferguson 7622 with 16-ft. Schmeiser Till an' Bedder*

### SIGHTS OF SPRING

As the weather warms up, so too is farming equipment as farmers begin a busy 2021 season. Find the equipment you need at Carter Agri-Systems.

**MARCH – OCTOBER:**  
Mon. – Fri.: 8:00 am - 5:00 pm  
Sat.: 8:00 – Noon  
Sun.: Closed

**NOVEMBER – FEBRUARY:**  
Mon. – Fri.: 8:00 am - 5:00 pm  
Sat. & Sun. - Closed

[www.carterag.com](http://www.carterag.com)

Lund - 775-238-5295  
Winnemucca – 775-623-5057

MAY 2021  
LIKE US ON  
 **facebook**

# PRESEASON

# Service Work



When it comes to equipment maintenance, **CHANGE IS GOOD** .....changing out wear parts, oil, lubing, and filters, that is.



Give your machines a fresh start with

new oil and lubing.



Browse inventory online at [www.carterag.com](http://www.carterag.com)



Carter Agri-Systems has filters for every application

# Alfalfa SEED

Get the alfalfa seed you need for the 2021 season. At Carter Agri-Systems, we work hard to provide you a wide selection of high-quality seed from top manufacturers at the very best prices. We have just about every possible alfalfa variety to choose from. We have Roundup Ready, Salt Tolerant, HarvXtra, Traffic Tested, Dryland, Irrigated, Disease Resistant, and many more to choose from.

Did you know that in many areas of Nevada, we will deliver your bulk seed order for **FREE!**

Feel free to give us a call for a hassle-free, no-obligation estimate.

Name	Fall Dormancy	Winter Survival
Falcata	4.0	Excellent
FSG 408P	4.0	Superior 1.9
Ladak II	2.0	Superior 2.0
Lahontan	4.0	Very Good
Lander	3.5	Excellent
Powell	3.0	Very Good
Ranger Special	4.0	Very Good
Ranger II	3.0	Very Good 2.0
428 Roundup Ready	4.0	Excellent 1.0
FSG 423 Salt Tolerant	4.0	Excellent 2.0
FSG 639 Salt Tolerant	Semi-Dormant 6.0	Good 3.0
Vernal	2.0	Very Good
AmeriStand 201T	2	1.5
AmeriStand 435TQ RR	3.1	1.2
AmeriStand 318TQ	3.5	1.1
AmeriStand 419LH	3.8	2.0
AmeriStand 420LH RR	3.9	2.2
AmeriStand 480 HVXRR	4.0	2.2
AmeriStand 481 HVXRR	4.0	1.9
AmeriStand 445NT	4.0	2.5
AmeriStand 457TQ RR	4.2	1.8
AmeriStand 415NT RR	4.3	2.3
AmeriStand 416NT RR	4.3	Hardy
AmeriStand 427TQ	4.3	1.8
AmeriStand 446NT	4.4	Hardy
AmeriStand 428TQ	4.4	1.3
AmeriStand 455TQ RR	4.4	2.0
AmeriStand 518NT	5.2	1.9
AmeriStand 545NT RR	5.4	Good
AmeriStand HVX620 RR	6.0	SD
Alfagraze 600 RR	6.0	SD
AmeriStand 618NT	7.0	-
AmeriStand 715NT RR	7.4	ND
HvX840RR	7.9	-
AmeriStand 803T	8.3	-
AmeriStand 835NTS RR	8.4	-
AmeriStand 901TS	9.0	ND
AmeriStand 955NT RR	9.5	Very ND
WL319HQ	2.8	1.3
WL336HQ.RR	3.2	1.0
WL356HQ.RR	3.8	1.6
WL359LH.RR	3.9	2.2
WL354HQ	3.9	1.4
WL341HVX.RR	4.0	2.1
WL358LH	4.1	2.0
WL3441.RR	4.3	2.0
WL3471.HVXRR	4.3	1.9
WL349HQ	4.4	1.7
WL375HVX.RR	4.6	2.1
WL372HQ.RR	4.9	1.8
WL365HQ	4.9	1.1

Name	Fall Dorm.	Winter Survival
WL377HQ	6	Moderate
WL458HQ.RR	6	Superior
HVX620RR	6	Superior
WL467HQ	6.0	Superior
WL454HQ.RR	6.7	Moderate
WL538HQ	8.0	High
WL558HQ.RR	8.0	Superior
WL535HQ	8.2	Superior
HVX840.RR	8.2	High
WL656HQ	9.3	-
WL668HQ.RR	9.3	-
Hi-Gest® 360	3	1.5
AFX 460	4	1.5
Hi-Gest® 660	6	-
AFX 960	9	-
AFX 1060	10	-
AFX 429	4	2
AFX 469	4	1.5
AFX 579	5	2.5
AFX 779	7	-
Rugged	3	1
AFX 547	4	2
Cisco II	6	2
PGI 908-S	9	-
AFX 463RR Brand	4	2
AFX 455HVX	4	2
322 LH Brand	3	2
NEW 324 LH Brand	3	2
405 Brand	4	2
PGI 529	5	1
HybriForce 4400	4	2.0
HybriForce 3430	4	2.1
HybriForce 3420/Wet	4	1.8
HybriForce 3400	4	1.8
HybriForce 2420/Wet	4	1.8
HybriForce 3600	6	0
HybriForce 2600	6	2.0
Magnum 8	4	2.2
Magnum Salt	4	1.8
Magnum 7	4	1.6
Magnum 8-Wet	4	2.5
Magnum 7-Wet	4	1.6
MagnaGraze II	3	1.5
Magna 200 HVX Brand	4	2.0
Magna 100 RR Brand	4	2.0
Magna 555 Brand	5	1.6
Magna 715	7	-
Magna 801FQ	8	-
Magna 905	9	-
Magna 995	9+	-
Durastan Brand	4	2



**PRE-OWNED EQUIPMENT**



**Ford 145 — Plow, new ware parts.....\$2,450**



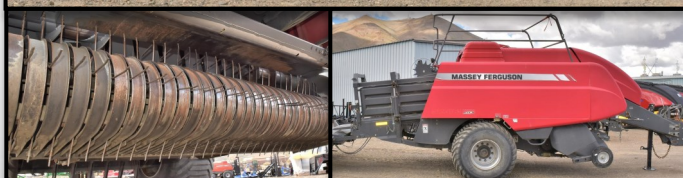
**Twinstar G2-7—Twinrake, Selling under consign-  
ment.....\$19,900**



**Case MRX690—Good condition, 10 ft. wide....\$19,000**



**Massey Ferguson 2170—Single Axle, 3x4 Bale Size,  
Good Condition.....\$43,000**



**Massey Ferguson 2170—Single Axle, 3x4 Bale Size,  
Good Condition.....\$43,000**



**Domries OFN99-4261—16 ft., Good Condi-  
tion.....\$12,900**



**2008 Massey Ferguson 2190**— 4'x4' bale size, single axle.....**\$41,000**



**2012 New Holland BB9080**—3x4 baler, 32,800 bales.....**\$39,000**



**2008 New Holland 216 Rake**.....**\$10,900**



**Massey Ferguson WR9770**—1,920 hours, 16-ft. Header, GPS, Very Good Condition.....**\$78,000**



**2008 New Holland 216 Rake**.....**\$11,500**

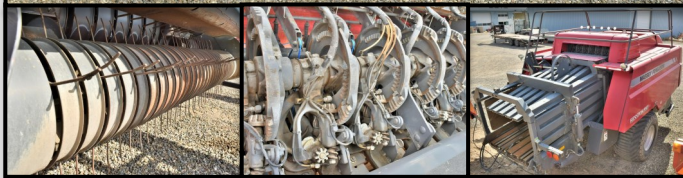


**2013 New Holland T8.360**—4,905 hours, Powershift Trans., GPS, Front & Rear Duals, Front Weights.....**\$98,500**

**PRE-OWNED EQUIPMENT**



**Kirby Mfg. Inc 6-Straw Bedder—6 x 8 x 28....\$22,750**



**2013 Massey Ferguson 2170—3x4 baler.....\$64,000**



**2013 New Holland T8.360—4WD, Powershift, 1,360 hours, suspended front axle, GPS.....\$149,000**



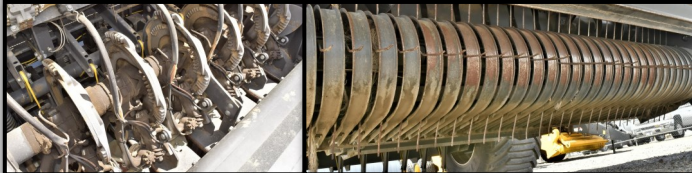
**2014 Massey Ferguson 7620— 1,340 hours, CVT transmission, Duals, 180 engine horsepower, GP, On Rent.....\$105,000**



**2015 Allen Rake 8803—This is a great rake in field ready condition.....\$14,500**



**2014 Allen Rake 8803—Clean Unit.....\$12,500**



**Massey Ferguson 2270**—Single Axle, Harvest Tech Hay Boss Applicator, Very Good Condition..... **\$85,000**



**2017 Phiber VS1206**—Bale accumulator capable of stacking two to three high, unloads in varying speeds between 3 and 13 mph, fully automatic..... **\$24,000**



**2019 Massey Ferguson WR9980**—1,000 hours, single conditioner, GPS..... **\$119,000**



**2017 New Holland T8.320**—1,932 hours, Powershift Trans., GPS, Front weights, Good condition.... **\$165,000**



**Massey Ferguson WR9770**—1,955 hours, 16-ft. Header, Very Good Condition..... **\$75,000**



**2017 Massey Ferguson 1844S**—3,233 hours.... **\$35,000**



# PRE-OWNED EQUIPMENT

TRACTORS		RAKES / TEDDERS	
2013 NEW HOLLAND T8.360 - 4wd, Powershift, 1,360 Hours, Suspended front axle, GPS	\$149,900	2008 NEW HOLLAND 216 - Hydraulic Basket Rake	\$11,500
2013 NEW HOLLAND T8.360 - 4wd, Front & Rear Duals, Powershift, 4,905 Hours, GPS	\$98,500	2008 NEW HOLLAND 216 - Hydraulic Basket Rake	\$10,900
2017 NEW HOLLAND T8.320 - Powershift Transmission, GPS, Front Weight, Good Condition	\$165,000	2020 ROWISE RAKE ULTIMATE 19 (NEW) - New, 19 Wheels, Hydraulic Adjustment	\$41,950
2015 NEW HOLLAND T8.320 - CVT Transmission, GPS, On Rent	\$175,000	2013 ALLEN 8827 - Basket Rake, Good Condition	\$6,900
2014 MASSEY FERGUSON 7620 - 1,340 hours, CVT Transmission, Duals, 180 Engine HP, GPS, On Rent	\$105,000	2015 VERMEER R23A - Hydraulic Twinrake	\$8,900
<b>SWATHERS / MOWER CONDITIONER</b>		VERMEER R23A - Manual Unfold Rake, Good Condition, Selling Under Consignment	\$6,900
2019 MASSEY FERGUSON WR9980 - 1,000 hrs, Single Conditioner, GPS	\$119,000	VERMEER R23A - Rake	\$3,500
MASSEY FERGUSON WR9770 - 16-ft. Header, GPS, 1,920 Hours	\$78,000	DARF 917 - Rake	\$9,900
MASSEY FERGUSON WR9770 - 16-ft. Header, 1,955 Hours	\$75,000	2015 ALLEN 8803 - Great Rake, Field Ready Condition	\$14,500
MASSEY FERGUSON 9635 - Swather with 16-ft. Header	Coming	2014 ALLEN 8803 - Clean Unit	\$12,500
NEW HOLLAND H8080 -	Coming	H&S HD-II - Heavy Duty Wheel Rake	\$28,900
NEW HOLLAND HW340 - Winnemucca	\$18,500	TWINSTAR G2-7 - Twinrake, Selling Under Consignment	\$19,900
NEW HOLLAND HW340 - Winnemucca	\$18,500	<b>OTHER EQUIPMENT</b>	
2013 NEW HOLLAND HS16 - Haybine Rotary Header, Parts	\$2,500	OTECO Track Filler (BRAND NEW)	\$14,250
2011 NEW HOLLAND HS 14 - Header	\$2,500	NEW HOLLAND 1085 - Bale Wagon	Coming
<b>BALERS</b>		JAYLOR 3650 - Feeder	\$18,900
2008 MASSEY FERGUSON 2190 - 4x4 Baler, Single Axle	\$41,000	FORD 145 - Plow	\$2,450
MASSEY FERGUSON 2170 - 3x4 Baler, Good Condition	\$43,000	VERMINATOR Gopher Machine (New)	\$5,200
MASSEY FERGUSON 2170 - 3x4 Baler, Good Condition	\$43,000	2017 PHIBER VS1206 STACKING ACCUMULATOR - Stacks 2 to 3 bales	\$24,000
2013 MASSEY FERGUSON 2170 - 3x4 Baler	\$64,000	KIRBY 6-BALE FEEDER	\$22,750
2018 MASSEY FERGUSON 2270 - 15,800 bales	\$85,000	PHIBER AC4104 - Accumulator	\$3,500
2017 MASSEY FERGUSON 1844s - 3,233 hrs	\$33,900	CASE IH MRX690 - Disc Ripper, Good Condition	\$19,000
2012 NEW HOLLAND BB9080 - 3x4 Baler, 32,800 bales	\$39,000	DOMRIES OFN99-4261 - 16-ft. Disk, Good Condition	\$12,900
2018 MASSEY FERGUSON 2290 - 11,800 Bales, 4x4, Great Condition	\$99,500	CAT 262B - Skid Steer	\$19,500
NEW HOLLAND BB960A - Patts Baler	\$7,900		

Check out our inventory of equipment at [WWW.CARTERA.G.COM](http://WWW.CARTERA.G.COM)

[www.masseyferguson.us](http://www.masseyferguson.us)

The new Massey Ferguson® 6700 Series tractors are unlike any mid-range we've ever built. They're engineered from the ground up, then tested in the harshest conditions around the world, for more power, versatility and long-lasting operation. These machines are manufactured to provide unmatched lift capacity and the power to pull heavier implements, with the next-level comfort of our deluxe cab and features. But don't just take our word for it, come demo the 6700 Series today.

**TESTED IN EXTREME CONDITIONS  
ACROSS THE GLOBE. READY TO  
HANDLE THE TOUGHEST TASKS AT  
HOME.**



**MASSEY FERGUSON**

**CARTER  
GRI-SYSTEMS**

PO BOX 9  
45 WEST FIRST NORTH  
LUND, NV 89317