



ATTENTION!
NO BALER SCHOOL
THIS YEAR
See pg. 2 for details

"BIG ENOUGH TO SERVE YOU, SMALL ENOUGH TO CARE"
- Phil Carter

At Carter Agri-Systems, we have the right seed for your specific need at great prices—guaranteed!

We not only offer alfalfas varieties for every climate zone, soil type, and end use, but we also have a large assortment of other seed varieties, such as grains and grain mixes, pasture and forage mixes, grasses, clover and legumes, corn, safflower, and custom mixes.



FREE DELIVERY

Did you know we offer free delivery of bulk seed orders to select areas throughout Nevada? Give us a call. We would be happy to provide you a quote for all your agricultural seed needs.



MARCH – OCTOBER:
Mon. – Fri.: 8:00 am - 5:00 pm
Sat.: 8:00 – Noon
Sun.: Closed

NOVEMBER – FEBRUARY:
Mon. – Fri.: 8:00 am - 5:00 pm
Sat. & Sun. - Closed

www.carterag.com

Lund - 775-238-5295
Winnemucca – 775-623-5057

FEBRUARY 2021





2021 BALER SCHOOL CANCELLED

In an effort to be good citizens and socially responsible at this unique time of the COVID-19 pandemic, we have decided to cancel our 2021 Baler School, which we traditionally hold every March. We are reluctant to make this decision, and we will miss the opportunity to meet with each of you. But, looking forward, we are optimistic that restrictions will be lifted in the not-too-distant future.

Looking ahead, we anticipate that we will hold our next Baler School in March of 2022 and then continue our annual Baler School tradition.

As the spring season quickly approaches, we are excited to work with each of you to help you accomplish your farming goals. Thank you very much for your business and for your understanding.

CARTER AGRI-SYSTEMS

The Karat 12 cultivator is perfect for heavy soils and no-tillage cultivation for shallow, medium, and deep cultivation.

- Its bars are arranged at 35.4–31.5–35.4 in. distances to provide sufficient clearance for clogging-free operation even with 4 rows of tines.
- The symmetrical tine arrangement effectively minimizes lateral pull, prevents unilateral dipping of the implement into the soil, and optimizes pass alignment.
- The depth control wheels positioned next to the first row of tines ensure that the cultivator is optimally guided.
- If reconsolidation is not desired, the Karat 12 can also be used without a roller.
- The Karat is equipped with an easy quick-change tine share system that allows you to switch out tine shares without tools.
- Deep cultivation to a depth of 11.8 inches intensively loosens the soil, while furrow press rollers prepare an optimal seed bed.



The Rubin 12 is suitable for both stubble cultivation and primary soil tillage, even in very heavy soil conditions.

- Two rows of 2.4-ft. diameter serrated concave discs produce intensive mixing and crumbling.
- The symmetrical arrangement of the discs in each row enables working without lateral pull, even at high driving speeds and sloped conditions.



- The 20° angle of the discs to the soil and the 16° angle to the direction of travel ensure optimum penetration and enable cultivation across the full width from a working depth of 2–3/4 in.
- The legs are specially curved and coiled to provide maximum clearance between the discs and prevents blockages.
- High speeds of travel at reduced slip result in lower fuel consumption and a higher acreage performance.

WHEEL TRACK FILLER



~ Quality that ~
Doesn't Quit



Wheel ruts are a problem as old as center pivots themselves. The Oteco Wheel Track Filler fills ruts in a single pass. One-man operation makes it easy to fill ruts of virtually any depth. With a load rating of 14-tons, durable dual-shield and pulsar welds, and heavy steel frames and walls, the Oteco Wheel Track Filler is built tough to last a lifetime, if not longer.

Track Fillers available at \$14,250



SETTING THE STANDARD IN BIG BALE STACKING

MIL-STAK LARGE BALE STACKERS

SELF-PROPELLED BALE WAGONS

BALE SIZE: 3X3, 3X4, & 4X4

MIL-STAK self-propelled bale wagons have been designed from the ground up for speed, durability, and ease of operation. From the rugged frame and Cummins/Allison powertrain, to the quiet air-conditioned cab and proven MIL-STAK bale loading concepts, all aspects of MIL-STAK self-propelled bale wagons come together to make these the machine to turn to when the pressure is on the line. MIL-STAK self-propelled bale wagons handle alfalfa, straw, corn stalks, and more in 3x3, 3x4, and 4x4 bales with ease.

PULL-TYPE LARGE BALE STACKER

BALE SIZE: 3X3, 3X4, & 4X4

With MIL-STAK large bale pull-type stackers you can single-handedly load and stack up to 120 large square bales per hour from the comfort of your tractor cab. They are easy to operate and are designed to withstand years of high use in demanding conditions.



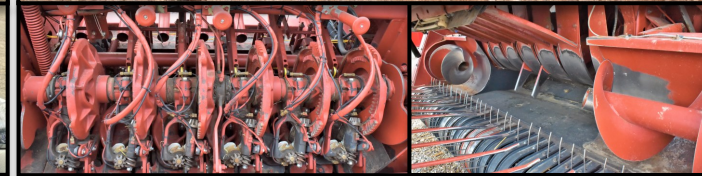
PRE-OWNED EQUIPMENT



AerWay AW2500-8B38-D972—25-ft.....\$13,900



2013 New Holland T8.360—Really Good Condition, 1,360 hours, 312 hp, 4WD, suspended front axle, GPS.....\$149,900



2004 Hesston 4790—33,134 bales.....\$29,900



2016 Case 580 SN WT—2.994.2 hours.....\$69,500



2008 New Holland 216 Rake.....\$11,500



2015 Allen 8803 Rake—Great rake in field-ready condition.....\$14,500



2008 Massey Ferguson 2190 Large Square Baler—
4'x4' bale size, single axle.....**\$41,000**



2013 Massey Ferguson 2170—3x4 baler.....\$64,000



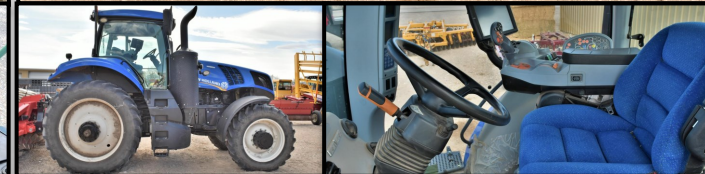
2008 New Holland 216 Rake.....\$10,900



2014 Massey Ferguson 1386—16-ft., Very Good
Condition.....**\$29,900**



2015 John Deere W260—16 ft. 500R Rotary Header,
Low Hours, Good Condition.....**\$115,000**



2015 New Holland T8.320—1,064 hours, CVT Trans-
mission, GPS, Good Condition.....**\$175,000**

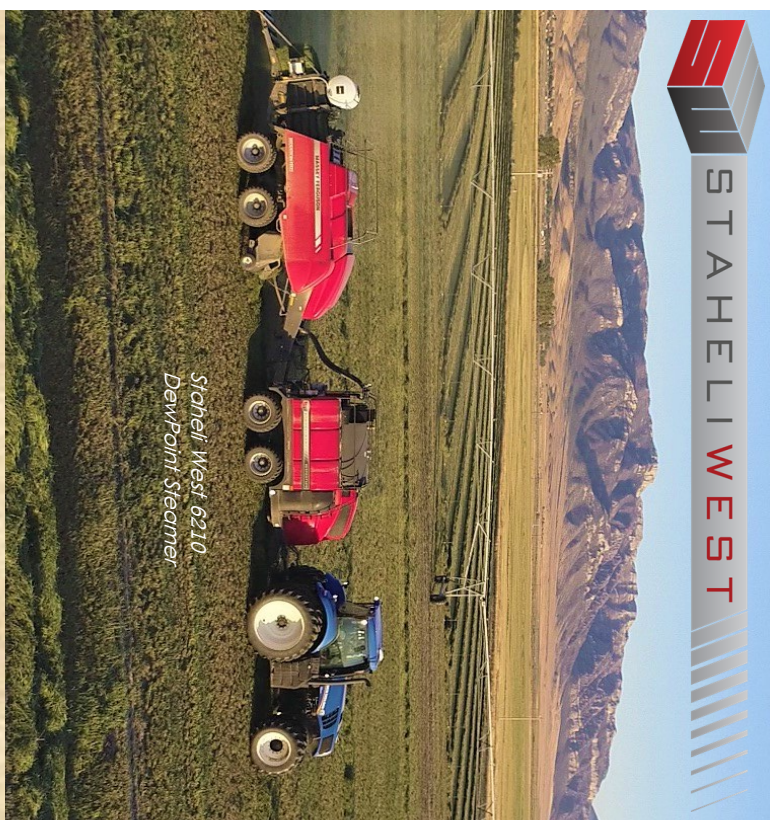


PRE-OWNED EQUIPMENT

TRACTORS		RAKES / TEDDERS	
2013 NEW HOLLAND T8.360 - 4wd, Powershift, 1,360 Hours, Suspended front axle, GPS	\$149,900	2008 NEW HOLLAND 216 - Hydraulic Basket Rake	\$11,500
2015 NEW HOLLAND T8.410 - 1,665 hours, GPS, Powershift Trans, Nice Unit	Call for price	2008 NEW HOLLAND 216 - Hydraulic Basket Rake	\$10,900
2015 NEW HOLLAND T7.245 - 4wd, 165 PTO HP, Powershift, 1,500 Hours	\$99,500	2020 ROWSE RAKE ULTIMATE 19 (NEW) - New, 19 Wheels, Hydraulic Adjustment	\$41,900
2015 NEW HOLLAND T8.320 - CVT Transmission, GPS	\$175,000	2013 ALLEN 8827 - Basket Rake, Good Condition	\$6,900
2014 MASSEY FERGUSON 7620 - 1,254 hours, CVT Transmission, Duals, 180 Engine HP, GPS, On Rent	\$105,000	2015 VERMEER R23A - Hydraulic Twinrake	\$8,900
SWATHERS / MOWER CONDITIONER			
2015 JOHN DEERE W260 - 16' Rotary Header, Low Hours, Great Unit!	\$115,000	2015 ALLEN 8803 - Great Rake, Field Ready Condition	\$14,500
2014 MASSEY FERGUSON 1386 - 16' Disc Mower Conditioner, Very Good Condition	\$29,900	2014 ALLEN 8803 - Clean Unit	\$12,500
2012 CHALLENGER WR9770 - 4,270 hours, 2,810 header hours	\$38,000	VERMEER R2800 - Twinrake, Excellent Condition, Selling Under Consignment	\$23,900
HESSTON 9260 - Swather	\$39,900	H&S HD-II - Heavy Duty Wheel Rake	\$28,900
KUHN FC4000RG - Mower Conditioner	\$15,000	TWINSTAR G2-7 - Twinrake, Selling Under Consignment	\$19,900
2013 NEW HOLLAND HS16 - Haybine Rotary Header, Parts	\$2,500	OTHER EQUIPMENT	
2011 NEW HOLLAND HS 14 - Header	\$2,500	OTECO Track Filler (BRAND NEW)	\$14,250
BALERS			
2008 MASSEY FERGUSON 2190 - 4x4 Baler, Single Axle	\$41,000	2019 KUHN EL282-400 - Power tiller, 13-ft. Good Condition	\$27,950
2013 MASSEY FERGUSON 2170 - 3x4 Baler	\$64,000	JOHN DEERE E8450 - Plow	\$4,200
HESSTON 4790 - Baler, 31,134 bales	\$29,900	FORD 145 - Plow	\$2,450
2014 NEW HOLLAND BB340S - 3x4 Baler, Steam HDW, 1-3/4" PTO, Gazeeka, Tandem Axle	\$53,000	VERMINATOR Gopher Machine (New)	\$5,200
2012 HEW HOLLAND BB9080 - 3x4 Baler, Tandem Axle	\$55,000	2017 PHIBER VS1206 STACKING ACCUMULATOR - Stacks 2 to 3 bales	\$19,000
		KIRBY 6-BALE FEEDER	\$22,750
		PHIBER AC4104 - Accumulator	\$4,500
		CASE 580SN WT - Backhoe with front-end loader, 2,993 hours	\$69,500
		AERWAY AW2500-8B38-D972	\$13,900



If you want Better Hay, Consistent Quality, the Ability to Create Your Own Dew and Bale as soon as Your Hay is Dry, Heavier Bales, Greater Leaf Retention, a Fast Breakeven Point, and a Solid Return on Investment—then you need a Staheli West 6210 DewPoint Steamer. Call us today to learn more about how a Steamer can significantly improve the way you do hay.



Staheli West 6210
DewPoint Steamer



STAHELII WEST



PO BOX 9
45 WEST FIRST NORTH
LUND, NV 89317